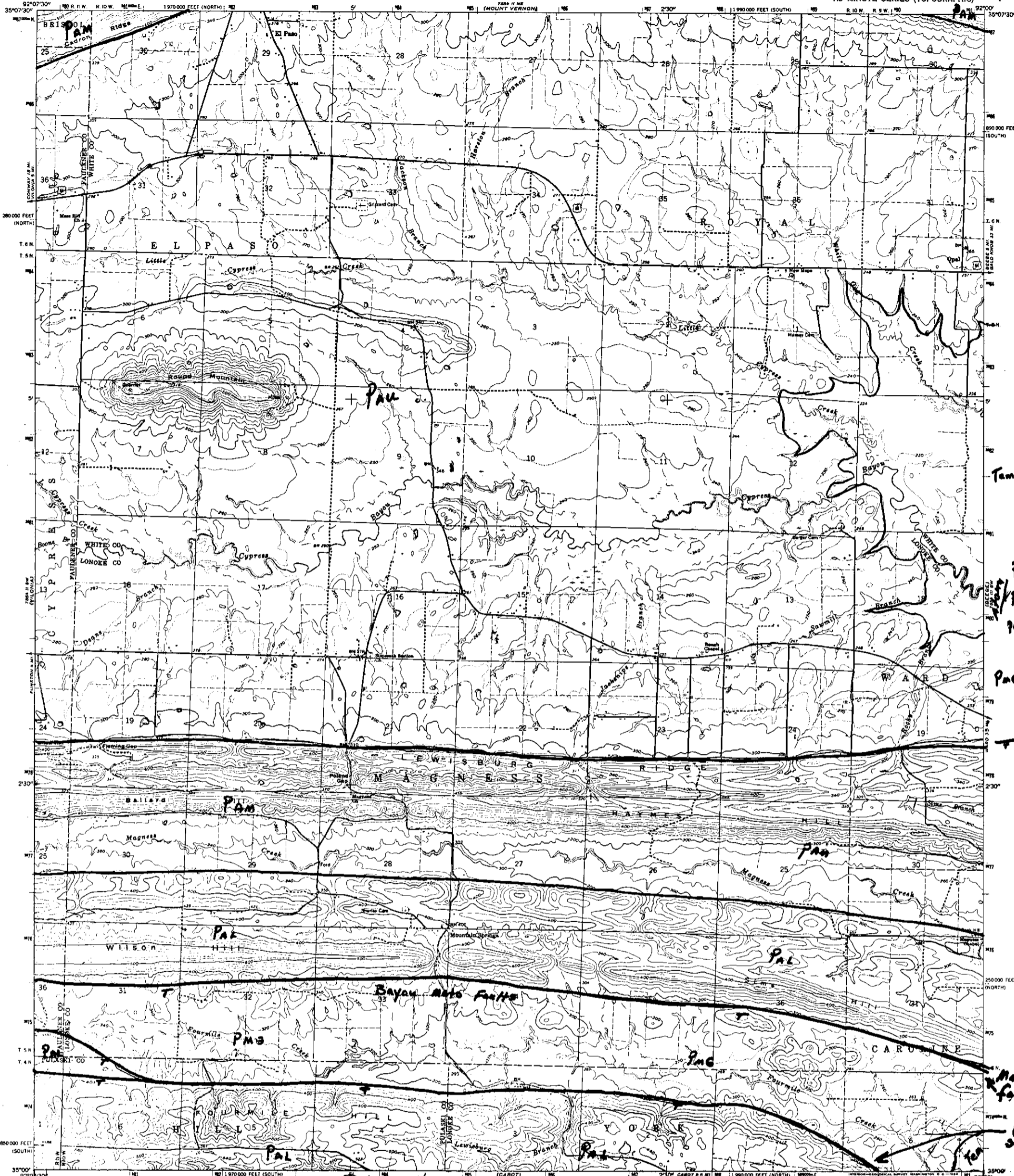


For State mapping project

Mr. Malay

MOUNTAIN SPRINGS QUADRANGLE ARKANSAS 7.5 MINUTE SERIES (TOPOGRAPHIC)

UNITED STATES DEPARTMENT OF THE INTERIOR GEOLOGICAL SURVEY

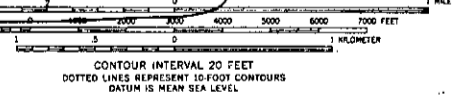


Map prepared and published by the Geological Survey

Control by USGS and USC&GS
Topography by photogrammetric methods from aerial photographs taken 1960. Field checked 1960.
Polyconic projection, 1927 North American datum
0.000-foot grid based on Arkansas coordinate system, north and south zones.
1000-meter Universal Transverse Mercator grid ticks, zone 15, shown in blue.
Fine red dashed lines indicate selected fences and field lines where generally visible on aerial photographs. This information is unchecked.

UTM GRID AND 1983 MAGNETIC NORTH DECLINATION AT CENTER OF SHEET

Reduce this line (SCALE 1:25000)



CONTOUR INTERVAL 20 FEET
DOTTED LINES REPRESENT 10-FOOT CONTOURS
DATUM IS MEAN SEA LEVEL

ROAD CLASSIFICATION
Major road
Light-duty
Unimproved dirt
U.S. Route



C.G. Stone August, 1968

MOUNTAIN SPRINGS, ARK.
N3500-W9200/7.5
1963
AMS 7504 II SE-SERIES V084

MASTER COPY

Tam- M
An-
Pm-
Pal-1
Pm-1
Main fault
Fault zone?